

# THE PREPAREDNESS REPORT

The Center for Emergency Preparedness and Disaster Response

Volume 10, Issue 3 | February 2, 2012



## Communicable and Recent Disease Updates: **Updated**

### Seasonal Influenza



The CDC reports that, as of January 21, 2012, seasonal influenza level remains relatively low. The proportion of deaths attributed to pneumonia and influenza was slightly above the epidemic threshold and one influenza-associated pediatric death was reported. The proportion of outpatient visits for influenza-like illness (ILI) is below baseline. Regional influenza activity was reported by four states (Colorado, Kentucky, Missouri and Virginia), Local influenza activity was reported by eight states (California, Kansas, Massachusetts, Michigan, Montana, New Hampshire, New Jersey and Texas) and Sporadic influenza activity was reported by Guam and 35 states (Alabama, Alaska, Arizona, Arkansas, Connecticut, Florida, Georgia, Hawaii, Illinois, Indiana, Iowa, Louisiana, Maine, Maryland, Minnesota, Mississippi, Nebraska, Nevada, New Mexico, New York, North Carolina, North Dakota, Ohio, Oregon, Pennsylvania, Rhode Island, South Carolina, South Dakota, Tennessee, Utah, Vermont, Washington, West Virginia, Wisconsin and Wyoming. For further information, please visit: <http://www.cdc.gov/flu/weekly/>.

### Avian Influenza

The WHO reports the cumulative number of confirmed human cases of highly pathogenic avian influenza A (H5N1) as of January 24, 2012 to be 583 cases with 344 deaths resulting in a case mortality rate of 59%. These figures represent the total H5N1 influenza cases since 2003. To view the cumulative and individual country indexes, please visit: [http://www.who.int/influenza/human\\_animal\\_interface/EN\\_GIP\\_20120124CumulativeNumberH5N1cases.pdf](http://www.who.int/influenza/human_animal_interface/EN_GIP_20120124CumulativeNumberH5N1cases.pdf).

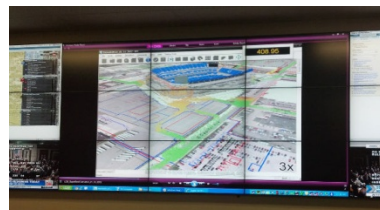
## Breaking News: **New**



Civil defense officials reported nearly 100 injuries after a strong earthquake shook coastal Peru early Monday. The magnitude 6.3 quake hit about 15 kilometers (9 miles) southeast of Ica, at a depth of 39.2 kilometers (24.4 miles), the U.S. Geological Survey said. At least 96 people were injured in the quake, state-run TV Peru reported, citing civil defense officials. Police were patrolling the area while officials assessed damages, TV Peru said. At least one home was uninhabitable and two others were damaged, the state television station reported. Hotels in the area reported brief power outages but no damage. A 6.9-magnitude earthquake struck the same region in October, leveling dozens of buildings and leaving some homeless. In

2007, an 8.0-magnitude quake struck southwestern Peru, killing more than 500 people and injuring more than 1,000. The most serious damage from that quake occurred in towns and cities along the country's Pacific coast south of Lima, including Chincha, Canete, Pisco and Ica. For more on this developing event, please visit: [http://www.cnn.com/2012/01/30/world/americas/peru-earthquake/index.html?hpt=hp\\_t3](http://www.cnn.com/2012/01/30/world/americas/peru-earthquake/index.html?hpt=hp_t3).

## National Security/Readiness: **New**



Regional Operations Center (ROC)

With only a few days left until Super Bowl XLVI, which will be held in Indianapolis this year, security officials there unveiled a new emergency coordination center on Wednesday. "We are very proud of this new facility and hope that it serves as a national model of partnership between local, state and federal authorities," said Mayor Ballard at the Regional Operations Center's (ROC) grand opening. "The creation and

opening of the ROC is an integral part of our ongoing, proactive plan to ensure the safety of the public." Housed in 76,000-square foot building that was once the site of a shopping mall, the new operations center will coordinate emergency response for mass casualty events, natural disasters, and major events like the upcoming Super Bowl, the Indy 500, and the Indiana Black Expo. Local police, the FBI, and DHS will all have offices located in the new ROC. Officials will monitor crime, intelligence, and security camera feeds around the clock in the Real Time Crime Center/Situational Awareness Center, while the FBI will house their Intelligence Operations Center in the ROC to help prepare for a terrorist attack. For more information, please visit:

<http://www.fox59.com/news/wxin-regional-operations-center-regional-operations-center-opens-in-time-for-super-bowl-20120125.0.7068918.column>.

### INSIDE THIS ISSUE

2 US DHHS Region I Emergency Planning Office  
2 National Security/Readiness

2 Terrorism/Weapons of Mass Destruction  
3 Epidemiological Modeling Process Exercise

3 Education and Training  
4 Contact Information

## US DHHS Region I (New England) Emergency Planning Office (Office of the Assistant Secretary for Preparedness and Response – ASPR)

The following resources have been provided to assist your preparedness activities:

[http://www.ynhhs.org/emergency/US\\_DHHS\\_web\\_sites.pdf](http://www.ynhhs.org/emergency/US_DHHS_web_sites.pdf)



**Emergency Management Assistance Compact (EMAC) Preparedness Guide & Deployment Tips for State, Local and Tribal Public Health and Medical Personnel:**

[http://www.emacweb.org/index.php?option=com\\_pollydoc&format=raw&id=69&view=doc](http://www.emacweb.org/index.php?option=com_pollydoc&format=raw&id=69&view=doc)

## YNH-CEPDR Programs and Services

Center for Emergency Preparedness and Disaster Response



YNH-CEPDR is committed to developing and delivering effective and scalable services that advance healthcare planning, preparedness and response for emergencies and disasters. YNH-CEPDR offers the following services to hospitals, other healthcare delivery organizations, emergency management professionals, the business community and others.

- ASSESSMENTS/EVALUATIONS
- PLANNING
- OPERATIONS
- EDUCATION and TRAINING
- DRILLS and EXERCISES
- PROGRAM MANAGEMENT
- EVENT COORDINATION/MANAGEMENT
- INCIDENT RESPONSE SUPPORT
- SITUATIONAL AWARENESS/ANALYSIS

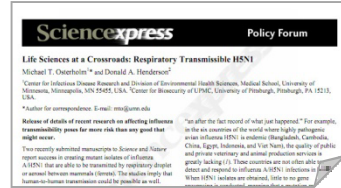
For additional information about these services, please contact us at (203) 688-5000 or [center@ynhh.org](mailto:center@ynhh.org), or visit our web site at [www.ynhhs.org/emergency](http://www.ynhhs.org/emergency).

### Questions, Comments, Suggestions or to Subscribe

For questions, comments, suggestions or to subscribe to the Preparedness Report, please e-mail us at [center@ynhh.org](mailto:center@ynhh.org), [www.yalenewhavenhealth.org/emergency](http://www.yalenewhavenhealth.org/emergency)

## Communicable and Recent Disease Updates: Updated (Continued)

### Osterholm Weighs in on Controversial H5N1 Research: **New**



Dr. Michael Osterholm of the University of Minnesota and Donald Henderson of the University of Pittsburgh in the *Policy Forum of Science* stated that the desire to disseminate the entirety of the methods and results of the two H5N1 studies, targeting dissemination of the information to scientists who request it will not materially increase our ability to protect the public's health from a future H5N1 pandemic. The emphasis should be to make every effort to ensure that this information does not easily fall into the hands of those who might use it for illegal purposes or that a biosafety accident resulting in an unintended release does not occur should be our first and highest priority. They stated "We can't unring a bell; should a highly transmissible and virulent H5N1 influenza virus that is of human making cause a catastrophic pandemic, whether as the result of intentional or unintentional release, the world will hold life sciences accountable for what it did or did not do to minimize that risk."

To read the entire *Forum* posting, please visit:

<http://www.sciencemag.org/content/early/2012/01/18/science.1218612.full.pdf?sid=7498818a-5004-4c7c-bbb6-6812ad819a70>

### National Security/Readiness: **New (Continued)**



New York's aging Plum Island Animal Disease Center, a major biosafety level 3 animal disease research facility is preparing to be phased out by the U.S. Department of Homeland Security's National Bio and Agro-Defense Facility, NBAF, currently being built in Manhattan, KS.

While NBAF is not projected to be fully operational until 2018, the pathogen work at Plum Island will not stop. Instead much of it will transition to Kansas State University's Biosecurity Research Institute (BRI) before eventually transitioning to NBAF. So far no date has been finalized for when research will be transferred to BRI, but researchers in Kansas have already begun work on projects related to current disease studies at Plum Island like African swine fever and highly pathogenic avian influenza. Researchers at Kansas State have also been installing specialized equipment to study diseases like the newly purchased insectary, which will help scientists work on insect-spread diseases like Rift Valley fever and blue tongue virus. For more information, please visit: <http://www.porknetwork.com/pork-news/latest/K-State-to-take-over-Plum-Islands-pathogen-studies-136940928.html>.

### Disasters Around the World: **New**



FEMA

There has been one new Major Disaster Declaration since January 6, 2012. Massachusetts was impacted by severe storms and snowstorms. For more information on this declaration, please visit:

<http://www.fema.gov/news/event.fema?id=16152>

### Terrorism/Weapons of Mass Destruction: **New**



Credit: Lenny Ignelzi/AP

Hackers, possibly from abroad, executed an attack on a Northwest rail company's computers that disrupted railway signals for two days in December, according to a government memo recapping outreach with the transportation sector during the emergency. On December 1, train service on the unnamed railroad "was slowed for a short while" and rail schedules were delayed about 15 minutes after the

interference, stated a Transportation Security Administration summary of a Dec. 20 meeting about the episode obtained by *Nextgov*. The following day, shortly before rush hour, a "second event occurred" that did not affect schedules, TSA officials added. The agency is responsible for protecting all U.S. transportation systems, not just airports. "Amtrak and the freight rails needed to have context regarding their information technical centers," the memo stated. "Cyber attacks were not a major concern to most rail operators" at the time, adding, "The conclusion that rail was affect [sic] by a cyber attack is very serious." For additional details, please visit:

[http://www.nextgov.com/nextgov/ng\\_20120123\\_3491.php?oref=topstory](http://www.nextgov.com/nextgov/ng_20120123_3491.php?oref=topstory)

## Opportunity to Participate in an Exercise to Determine the Requirements of a National Epidemiological Modeling Process



As part of ongoing efforts under a study to define the requirements of a successful national operational epidemiological

modeling process, the Yale New Haven Center for Emergency Preparedness and Disaster Response (YNH-CEPDR) and US Northern Command (USNORTHCOM) have conducted research and outreach to stakeholders to develop a draft framework for a National Operational Epidemiological Modeling Process (NOEMP). The purpose of this tabletop exercise is to test the draft framework for a National Operational Epidemiological Modeling Process (NOEMP) with a broader audience and within a scenario-based environment. The goal is to identify strengths and gaps of the current draft to include revisions and recommendations to the final report. [Click here](#) to register for this exercise. For more information or to receive an invitation please contact Jeff Schlegelmilch at [jeffrey.schlegelmilch@ynhh.org](mailto:jeffrey.schlegelmilch@ynhh.org)

Does your organization require assistance in the areas of patient safety, healthcare associated infections and improved customer service?

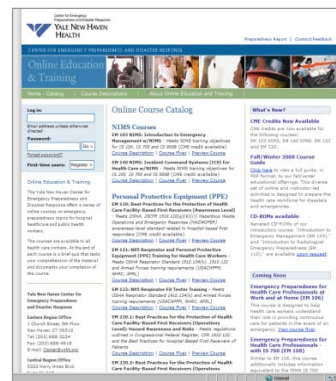
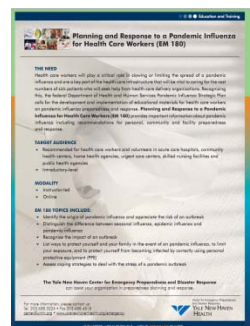
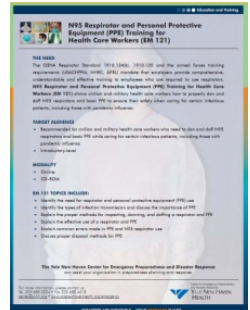


The Yale New Haven Health System Center for Healthcare Solutions offers services and programs that will help you meet current healthcare standards, priorities and other challenges. Healthcare-focused services include education and training, assessments, planning and program implementation and testing and evaluation in the disciplines of patient safety, healthcare associated infections, emergency management and service excellence. For more information, please visit [www.ynhhs.org/chs](http://www.ynhhs.org/chs).

## Education and Training Courses: Updated

YNH-CEPDR is pleased to spotlight several course offerings that may be previewed at: <http://ynhhs.emergencyeducation.org/>.

- EM 120: Best Practices for the Protection of Health Care Facility-Based First Receivers, Awareness Level:** This course is for health care workers who might be in a position to identify a contaminated victim arriving at a health care facility unannounced. This group includes ED clinicians, ED clerks and ED triage staff and hospital security staff who would be responsible for notifying hospital authorities of the arrival. This group would also include maintenance, environmental services, facility and engineering staff, security and contractors who are part of decontamination teams and/or setting up and taking down decontamination facilities. For a flyer, please visit [http://ynhhs.emergencyeducation.org/flyers/EM120\\_CourseFlyer.pdf](http://ynhhs.emergencyeducation.org/flyers/EM120_CourseFlyer.pdf).
- EM 121: N95 Respirator and Personal Protective Equipment (PPE) Training for Health Care Workers:** The OSHA Respirator Standard 1910.134(k), 1910.120 and the armed forces training requirements (USACHPPM, NHRC, AFRL) mandate that employers provide comprehensive, understandable and effective training to employees who are required to use respirators. N95 Respirator and Personal Protective Equipment (PPE) Training for Health Care Workers shows civilian and military health care workers how to properly don and doff N95 respirators and basic PPE to ensure their safety when caring for certain infectious patients, including those with pandemic influenza. For a flyer, please visit: [http://ynhhs.emergencyeducation.org/flyers/EM121\\_CourseFlyer.pdf](http://ynhhs.emergencyeducation.org/flyers/EM121_CourseFlyer.pdf).
- EM 180: Planning and Response to a Pandemic Influenza for Health Care Workers:** Health care workers will play a critical role in slowing or limiting the spread of a pandemic influenza and are a key part of the health care infrastructure that will be vital to caring for the vast numbers of sick patients who will seek help from health care delivery organizations. Recognizing this, the federal Department of Health and Human Services Pandemic Influenza Strategic Plan calls for the development and implementation of educational materials for health care workers on pandemic influenza preparedness and response. *Planning and Response to a Pandemic Influenza for Health Care Workers* provides important information about pandemic influenza including recommendations for personal, community and facility preparedness. For a flyer, please visit: [http://ynhhs.emergencyeducation.org/flyers/EM180\\_CourseFlyer.pdf](http://ynhhs.emergencyeducation.org/flyers/EM180_CourseFlyer.pdf)



YNH-CEPDR also offers an extensive number of courses that address important issues in healthcare preparedness, such as care of special populations, protection of the healthcare workforce and compliance with Joint Commission, OSHA and CMS regulations. YNH-CEPDR is committed to ensuring that our courses remain timely and current with best practices and cutting-edge content. These courses may be previewed at <http://ynhhs.emergencyeducation.org/>. Please contact Mark Schneider at (203) 688-5000 for further information.

FOR MORE INFORMATION, PLEASE CONTACT:

<p><b>YNH-CEPDR Eastern Regional Office Rebecca Cohen</b> (203) 688-5000 <a href="mailto:rebecca.cohen@ynhh.org">rebecca.cohen@ynhh.org</a></p>	<p><b>YNH-CEPDR National Capital Region Office Stewart D. Smith</b> 1101 Pennsylvania Ave., NW, 6<sup>th</sup> Fl., Washington, DC 20004 (202) 590-0774 <a href="mailto:stewart.smith@ynhh.org">stewart.smith@ynhh.org</a></p>	<p><b>YNH-CEPDR Central Regional Office Kristy Anderson</b> (469) 243-1403 <a href="mailto:kristy.anderson@ynhh.org">kristy.anderson@ynhh.org</a></p>	<p><b>YNH-CEPDR Western Regional Office Patrick Ward</b> (714) 321-0433 <a href="mailto:patrick.ward@ynhh.org">patrick.ward@ynhh.org</a></p>
	<p><b>Research/Copy Editor Joseph Filakovsky, DNP, RN,</b> (203) 688-5000 <a href="mailto:joseph.filakovsky@ynhh.org">joseph.filakovsky@ynhh.org</a></p>	<p><b>Editorial Layout Dean Hathaway</b> (203) 688-5000 <a href="mailto:dean.hathaway@ynhh.org">dean.hathaway@ynhh.org</a></p>	
<p>Preparedness Report Archive: <a href="http://www.yalenehavenhealth.org/emergency/commu/archives.html">http://www.yalenehavenhealth.org/emergency/commu/archives.html</a>  <a href="#">Click here to subscribe, update your profile or unsubscribe</a> to <i>The Preparedness Report</i>.</p>			
<p>One Church Street, 5<sup>th</sup> Floor • New Haven, CT 06510 • Tel. (203) 688-5000 • Fax (203) 688-4618  <a href="mailto:center@ynhh.org">center@ynhh.org</a> • <a href="http://www.ynhhs.org/cepdr">www.ynhhs.org/cepdr</a> • <a href="http://www.ynhhs.org/chs">www.ynhhs.org/chs</a></p>			

<p>US DEPARTMENT OF HEALTH AND HUMAN SERVICES</p>	<p>US DEPARTMENT OF HOMELAND SECURITY FEDERAL EMERGENCY MANAGEMENT AGENCY (FEMA)</p>
<p><b>Gregory T. Banner, MS, CEM</b> Region I Regional Emergency Coordinator JFK Federal Building, Room 2100 • 15 New Sudbury Street • Boston, MA 02203 (617) 777-6404 <a href="mailto:gregory.banner@hhs.gov">gregory.banner@hhs.gov</a></p>	<p><b>Donald R. Boyce</b> Regional Administrator FEMA Region One 99 High Street • 6<sup>th</sup> Floor • Boston, MA 02110 (617) 956-7566 <a href="mailto:don.boyce@dhs.gov">don.boyce@dhs.gov</a></p>
<p><a href="http://www.hhs.gov/">http://www.hhs.gov/</a></p>	<p><a href="http://www.fema.gov/">http://www.fema.gov/</a></p>
<p><b>US Department of Health and Human Services 24x7 Operations Center</b>  <a href="mailto:hhs.soc@hhs.gov">hhs.soc@hhs.gov</a> • (202) 619-7800 • <a href="http://www.hhs.gov/disasters/">http://www.hhs.gov/disasters/</a></p>	